



CleanAir®

Performance Beyond Measure

ISOKINETIC GAS SAMPLING SYSTEMS

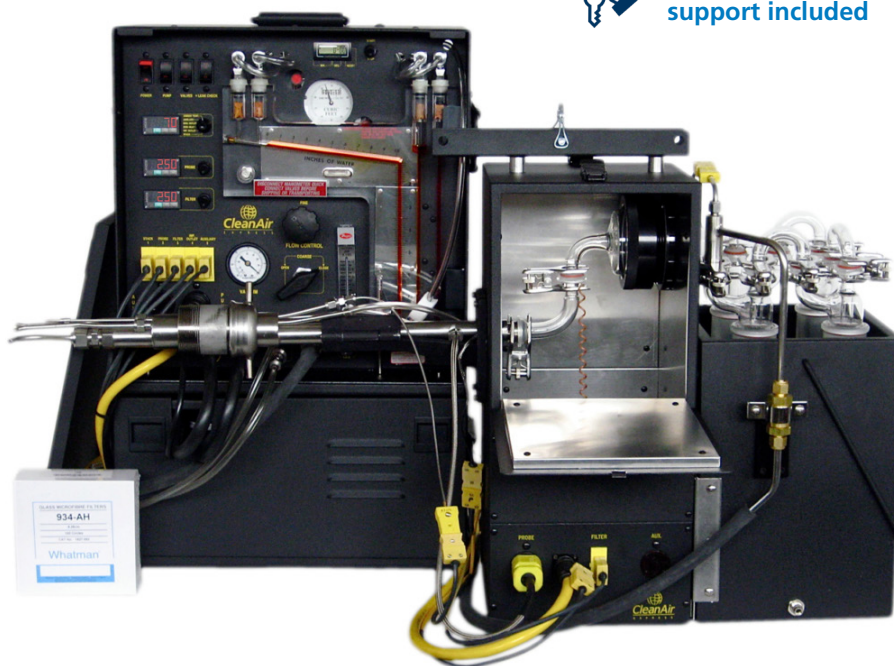
MODULAR EQUIPMENT FOR STACK TESTING



Isokinetic Gas Sampling System



Also available for rent with technical support included



The CleanAir isokinetic sampling system range allows the sampling of particulate and gas. A sample of gas or vapour is being taken continuously from a stack while maintaining the same velocity characteristics as at the point of sampling.

The Ideal Equipment for Particle & Gas Sampling in Accordance to EN and EPA Standards

Particles, including metallic ones, are deposited on a filter. Hot gases are conditioned in a series of cold bubblers. Gaseous heavy metals are absorbed by specific solutions. Condensates are trapped and a volumetric meter (DGM) measures the total volume of dry gas flow collected.

A Modular System For Every Application



DUST

Total Suspended Particles



PAHs

Polycyclic Aromatic Hydrocarbons



SO₃

Sulfur Trioxide



DIOXINS & FURANS

PCDD | PCDF



CORROSIVE GASES

HF | HCl | SO₂ | SOX | HCN | HBr | NH₃



HEAVY METALS

Hg | Cd | As | Cr | Ti | Pb



DISCOVER THE RANGE

The dust sampling setting is easily modified to perform USEPA, ISO and EN reference methods for sampling of dioxins and furans, PAHs, heavy metals, HF, HCl, as well as other isokinetic flue gas sampling.

MATERIAL	METHOD 5 CATECO	METHOD 8	CORROSIVE GASES				AROMATIC HYDROCARBONS	DIOXINS FURANS		HEAVY METALS					
	Dust (TSP)	SO ₃	HF	HCl	SO ₂	SO _x	PAHs	PCDD	PCDF	Hg	Cd	As	Cr	Tl	Pb
Stainless steel	•														
Pyrex	•		•	•	•	•	•	•	•	•	•	•	•	•	•
Quartz	•	•	•	•	•	•	•	•	•	•	•	•	•	•	•
Impingers	4	4	4	4	4	4	Special	Special		4	4	4	4	4	4

KEY POINTS

- Modular system
- Designed for harsh environments
- Custom probe
- Easy maintenance
- Made in the USA

CERTIFICATIONS

- ✓ CE Certified
- ✓ US EPA 40 CFR 60 Method 5
- ✓ ISO 9096
- ✓ EN 13284-1 standards

TECHNICAL SPECIFICATIONS

ISOKINETIC CONTROL CONSOLE

HEATED FILTRATION UNIT

GLASSWARE SET (including an 8.5cm pyrex filter holder)

PROBE LENGTHS: 0.6, 0.9, 1.2, 1.5, 1.8, 2.4 or 3 m
(special lengths upon request)

STANDARD UMBILICAL LENGTHS: 7.5, 15 or 30 m

STANDARD IMPINGERS COMPARTMENT: 5 or 8 impingers

CHOICE OF UMBILICAL: 7 / 15 OR 30 M

METHOD 5 PROBE: 60 / 120 OR 180 CM LENGTH

FULL SET OF STAINLESS STEEL NOZZLES
(1/8", 3/16", 1/4", 5/16", 3/8", 1/2")

SAMPLE KIT

GLASS OR QUARTZ FIBER FILTERS, DIAMETER 8.26 CM

STAINLESS STEEL ADAPTER FOR PORT FIXING (cable gland)

POWER : 230 VAC

WEIGHT : 60 to 125 kg (depending on model)

BASIC SET INCLUDES

- Metric control unit with pump (0028-230MCE)
- Standard oven (0032-230CE)
- 5 impingers compartment (0033)
- Stainless steel impinger outlet fitting (0034)
- 15 m quick-connect umbilical cord (0360-50QCCE)
- 1.8 m method 5 stainless steel probe (0106-B-SCE)
- Complete set of stainless steel nozzles:
1/8", 3/16", 1/4", 5/16", 3/8", 1/2" (0401-SS to 0406-SS)
- Sample recovering kit (0156)
- Stainless steel port adaptor (0140)

APPLICATIONS

CleanAir Isokinetic system is a modular equipment which is suitable for all types of industries.

- Regulatory control of atmospheric emissions
- Continuous Emissions Monitoring (CEM)
- Control and optimization of industrial processes
- Controlled environments
- Dust and PAH monitoring
- Emissions sampling
- Denox and Desox: filter tests, hospitals and clinics, HVAC applications (HVAC Control)
- Process control
- Laboratories
- Manufacturing plants
- UIOM incinerators
- Program sampling
- And more...

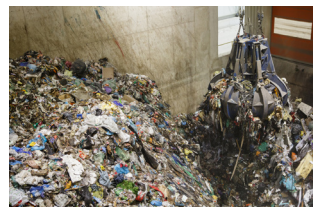
SECTORS



Petrochemical



Cement



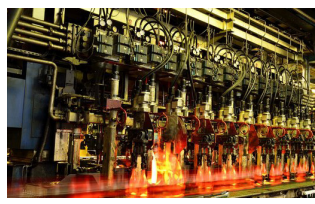
Waste Incineration



Power Generation



Steel



Minerals



Agrifood



Pulp & Paper

SYSTEM SCHEMATIC

